

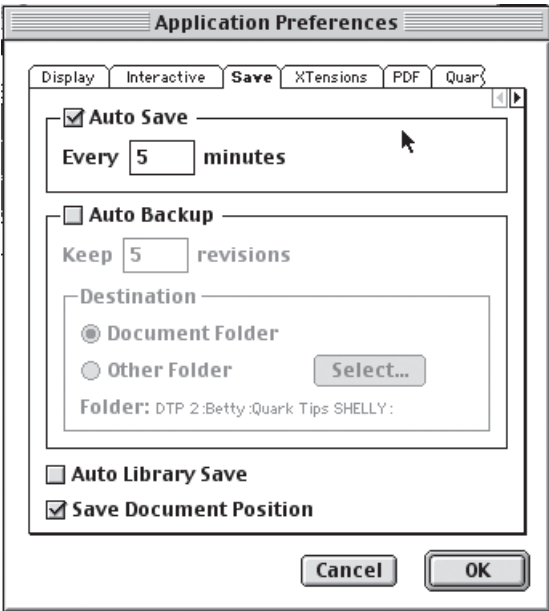
The Castle Press
1222 North Fair Oaks Avenue
Pasadena, CA 91103
800-794-0858
www.castlepress.com

GLOSSARY

Checking **Auto Save** protects your work from system or power failure. When checked, QuarkXPress will automatically record document changes to a temporary file in your document folder according to a specified time interval. Enter the interval (in minutes) in the **Every minutes** field. The default setting has **Auto Save** checked at an interval of **Every 5 minutes**. QuarkXPress will not overwrite the original file until you manually save (File → Save). When you open the document after a system interruption, QuarkXPress displays an alert indicating that the document will be restored to the last auto save version. If your last manual save is preferable to your last

auto save, you can choose **Revert to Saved** after you open the document to restore the last manual save.

The **Revert to Saved** command (**File → Revert to Saved**) reverts to the last manually saved version of a document regardless of your **Auto Save** settings. Pressing the Option key while you choose **File → Revert to Saved** reverts to the last auto-saved version of a document.



A Application Preferences